

POWER FILTER

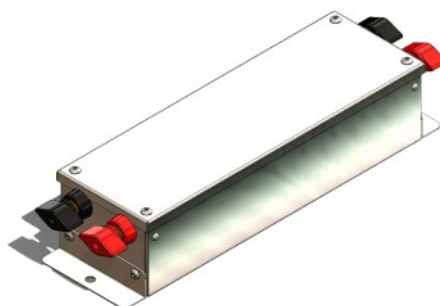
EMI PF40A-60dB

Feature Highlights

Power RF filter

Two-stage filter

High performance EMI suppression filter



Solution / Benefits:

The **EMIPF40A-60dB** TEMPEST Filter is designed to satisfy the requirements of your specific applications and projects.

A power filter is an electronic component that effectively reduces electromagnetic interference in power line of any equipment. Commonly, it is dedicated to improving the quality of the electrical energy and the efficiency of its use, in TEMPEST, EMI, EMP (Electromagnetic Pulse) and HEMP (High-Altitude Electromagnetic Pulse) applications.

The power filter ensures an attenuation of the unwanted signals of at least 60dB in the bandwidth from 100kHz to 1GHz, being included in the accepted industry standard for TEMPEST applications. For shielded enclosures, it may request for single power line, data, telephone and control line filters to cover all systems at risk.

The **EMIPF40A-60dB** filter used together with Information Technology Equipment (ITE) allows their qualification for compliance with the standards: SDIP 27/2, EN60950, EN55022, EN55024, IEC60939, EN 62368 and others.

The **EMIPF40A-60dB** is designed for the most stringent TEMPEST applications requiring compliance to **SDIP-27/2 Level A, B or C** or **EU IASG 7-03 Level A, B or C**.

Installation of filter supports equipment compliance with the requirement of the relevant InfoSec of the NSA Authority.

NOTE: EMI Shielding has the policy of continuing development and reserves the right to make design changes and improvements to the products. Specifications are subject to be changed without notice.

Company: EMI Shielding S.R.L., Unique Registration Code: RO 1285077, Trade Register Number: J23/503/29.01.2021, Address: Șos. Alexandriei, No. 82, Bragadiru, Ilfov, Romania, 077025, Email: office@roshielding.ro, Certified: ISO 9001

EMI
SHIELDING



TECHNICAL PARAMETERS

EMIPF40A-60dB

Brand	EMI Shielding
Product Specifications	
Rated voltage Single Phase	240VAC DC to 400Hz
Maximum rated voltage	250VAC
Rated Current	40A @40°C
Connectors (2 lines)	2 x POL 631 RT
Voltage Drop	<0.5V @6A DC
Line DC Resistance	<100mΩ
Heat dissipation	<10W
Insulation	560KΩ
Leakage	<3.5mA @240VAC 50Hz
Dimensions (WxDxH)	83x305x64mm
Weight (max.)	1,5Kg
Operating Temperature	-25°C ÷ +100°C
Climatic category	25/100/21 acc. to IEC 60068-1
Operating Humidity	20 ÷ 80% (no condensation)
Warranty	2 Years
TEMPEST	NATO SDIP 27/2 Level A, B or C and EU IASG 7-03 Level A, B or C
Conducted Emission Limits Certification	CISPR 25 Class 5 compliant CE Mark

**EMI
SHIELDING**

